



Hamster anti CD45.2 (Ms) (Leukocyte common antigen, LCA) Monoclonal Antibody

Alternative Name(s): CD45

Order Information

- **Description:** CD45(Ms) (Leukocyte common antigen, LCA)
- **Catalogue:** 603-132
- **Lot:** See label
- **Size:** 100ug/200ul
- **Host:** Hamster
- **Clone:** 104
- **Application:** IHC(P), FACS
- **Reactivity:** Hu, Ms

ANTIGEN PREPARATION

A recombinant protein of the human CD45 immunogen.

BACKGROUND

The leukocyte common antigen (LCA/CD45) consists of a family of heavily glycosylated glycoproteins of apparent MW 180- 240kD). It is a transmembrane protein-tyrosine-phosphatase. The LCA family includes a group of proteins present on all mature B and T lymphocytes, thymocytes, macrophages, spleen, lymph node, chronic lymphatic leukemia cells, bone marrow, thymus and granulocytes. It is absent in brain, kidney, liver, heart, erythrocytes, platelets and normal serum. The leukocyte common antigen is an abundant lymphocyte surface antigen that has been reported to be involved in signaling through the T cell antigen receptor. CD45 may function in the regulation of L-selectin (CD62L), in regulation of B-lymphocyte negative and positive selection and in T-cell activation. It stains lymphocytes, monocytes, eosinophils and also neoplastic cells of lymphoid origin. Neoplastic B cells and T cells in leukemia and in non-Hodgkin's lymphomas stain positive. This antibody may be useful in the evaluation of malignant lymphoma and nonlymphoid tumors. Neoplastic B and T cells in leukemia and in non-Hodgkin's lymphoma stain positive and hence can be distinguished from sarcomas and carcinomas.

PURIFICATION

The mouse IgG is purified by Protein A-Affinity Chromatography according to Isotyping

FORMULATION

This affinity purified antibody is supplied in sterile Phosphatebuffered saline (pH7.2) containing antibody stabilizer

SPECIFICITY

This antibody recognizes mouse CD45 protein. The other species are not tested.

STORAGE

The antibodies are stable for 24 months from date of receipt when stored at -20oC to -70oC. The antibodies can be stored at 2oC-8oC for three month without detectable loss of activity. Avoid repeated freezing-thawing cycles.

APPLICATIONS/SUGGESTED WORKING DILUTIONS*

- Western Blot: 0.1-1 µg/ml
- ELISA: 0.01-0.1 µg/ml
- Immunoprecipitation: 2-5 µg/ml
- IHC: 2-10 µg/ml
- Flow cytometry: 0.5-5 µg/10⁶ cells
- Molecular Weight: 180-240
- Positive Control: Kidney Tissue
- Cellular Location: Cell Membrane

FOR RESEARCH USE ONLY.

AbboMax, Inc 2528 Qume Drive, Suite 8, San Jose, California 95131, USA
1 408-573-1898 (Tel). 1 408-573-1858 (Fax). www.abbomax.com info@abbomax.com

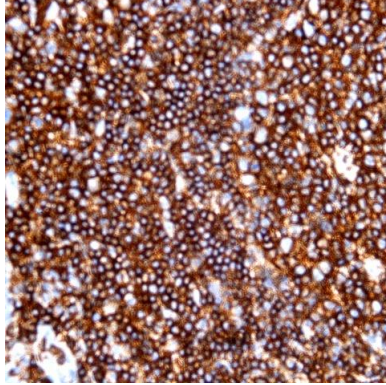


*Optimal dilutions should be determined by researchers for the specific applications.

FOR RESEARCH USE ONLY.

AbboMax, Inc 2528 Qume Drive, Suite 8, San Jose, California 95131, USA
1 408-573-1898 (Tel). 1 408-573-1858 (Fax). www.abbomax.com info@abbomax.com

DATA ATTACHMENTS



Immunohistochemistry: Human Tonsil (FFPE) stained with Mouse anti- CD45 (Clone 104) (Cat# 603-132) at 1:200 for 10 min @ RT. Staining of formalin-fixed tissue requires boiling tissue sections in 10 mM Citrate Buffer, pH 6.0 for 10 min followed by cooling at RT for 20 min.

REFERENCES

Schraven B, Kirchgessner H, Gaber B, Samstag Y and Meuer S. A functional complex is formed in human T lymphocytes between the protein tyrosine phosphatase CD45, the protein tyrosine kinase p56lck and pp32, a possible common substrate. *Eur. J. Immunol.* 21 (10), 2469-2477 (1991)

FOR RESEARCH USE ONLY.

AbboMax, Inc 2528 Qume Drive, Suite 8, San Jose, California 95131, USA
1 408-573-1898 (Tel). 1 408-573-1858 (Fax). www.abbomax.com info@abbomax.com